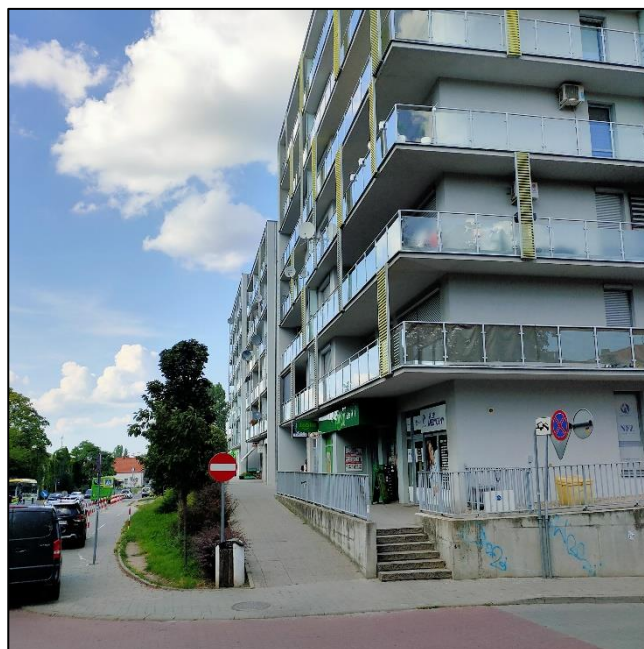
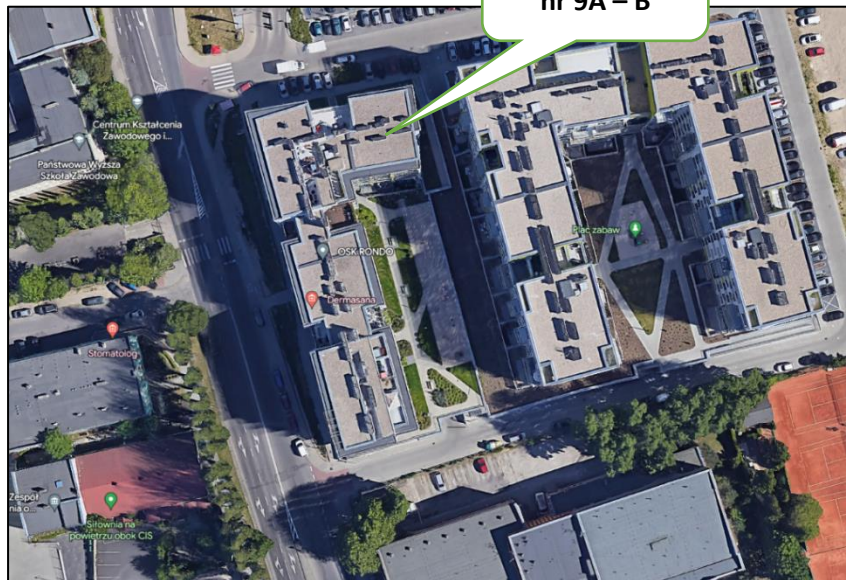
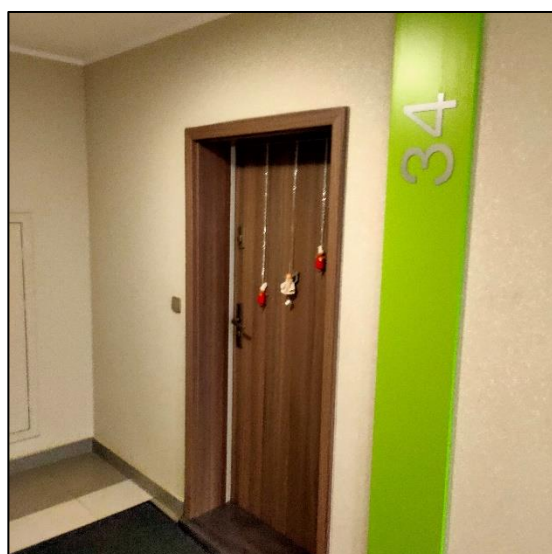
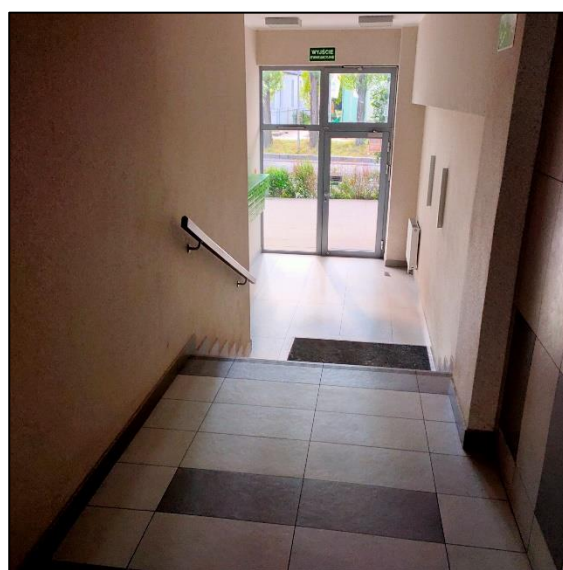
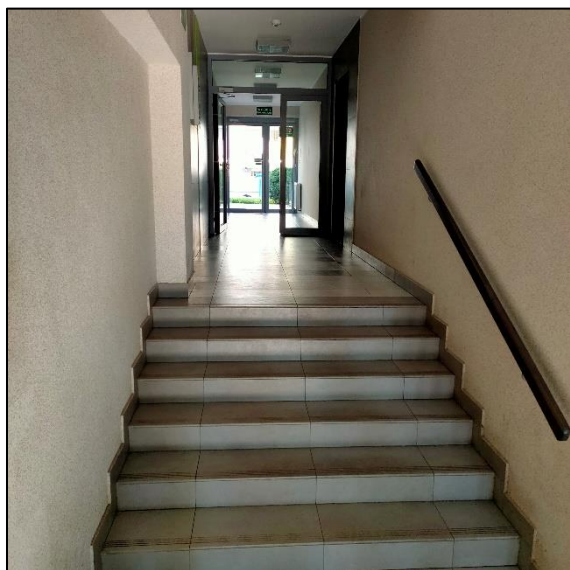


ul. St. Staszica  
nr 9A – B



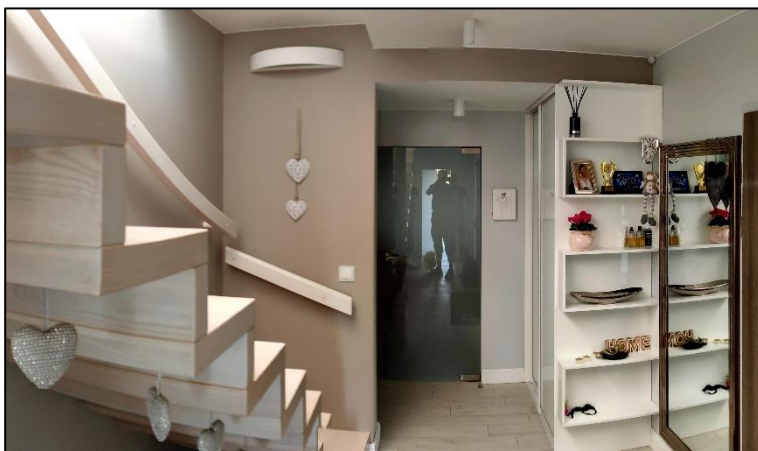
*Klatka schodowa, korytarze, winda, drzwi wejściowe do mieszkania*



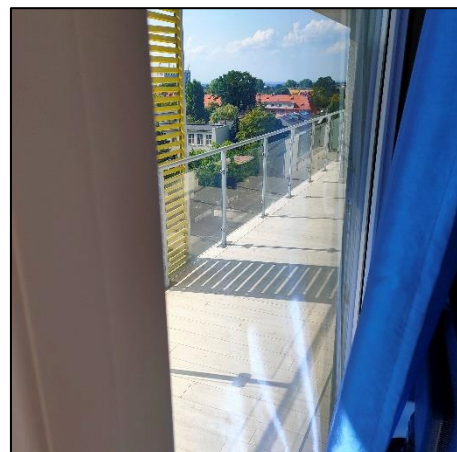
*Lokal mieszkalny nr 34*

*poziom I*

*Przedpokój i schody na poziom drugi*



*Pokój P-1 z widokiem na balkon*

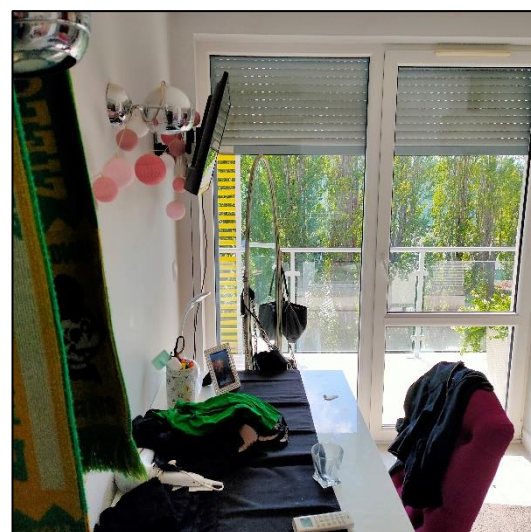
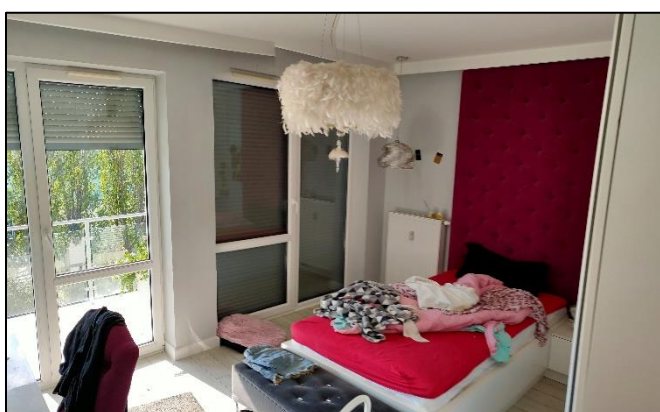




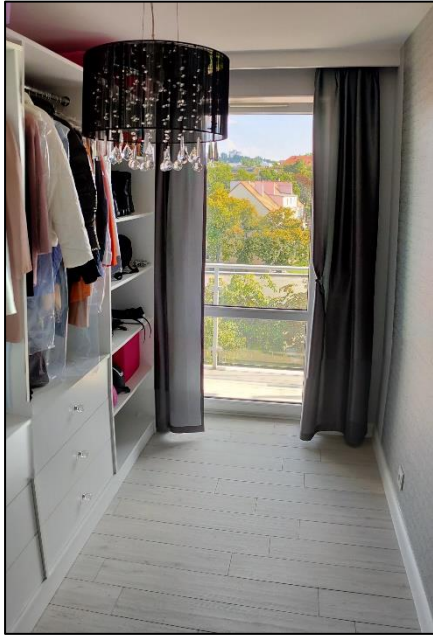
*Pokój P-2*



*POKÓJ P-3*



## *Garderoba*



## *Łazienka*



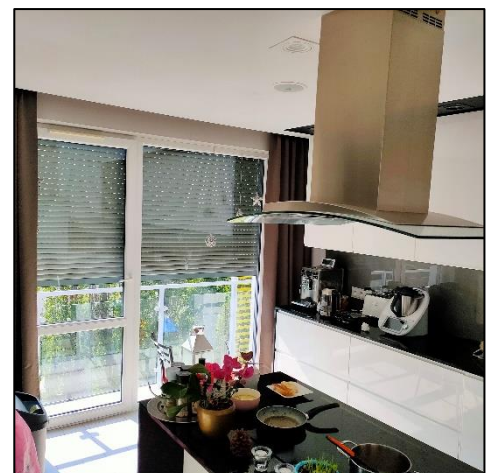


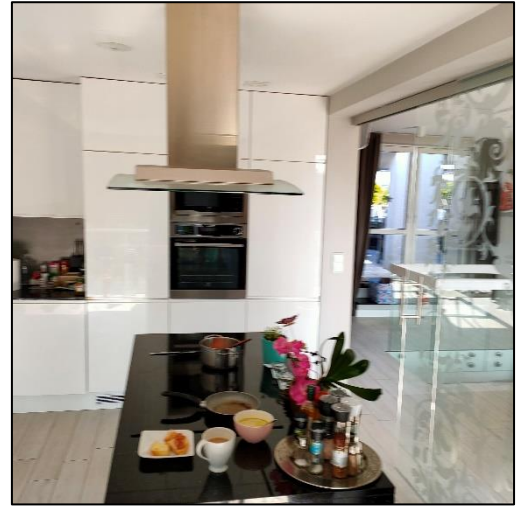
## *Poziom II*

### *Pokój dzienny*

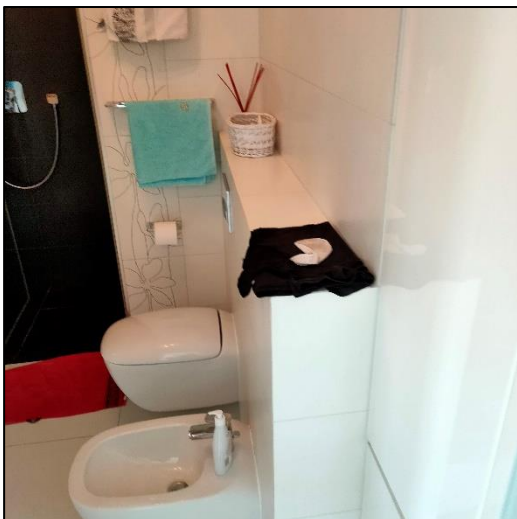


### *Kuchnia*



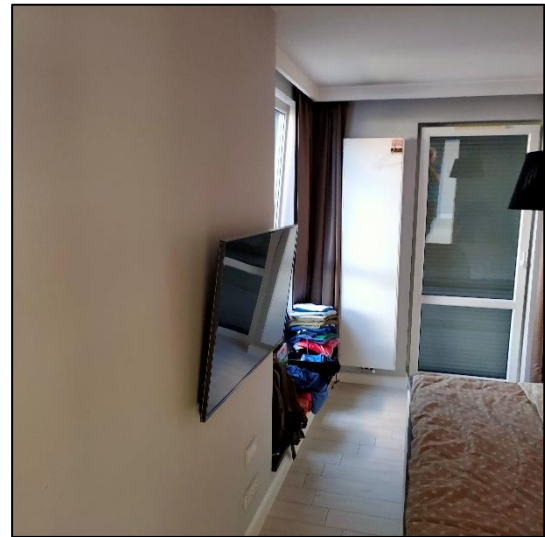


*Łazienka*





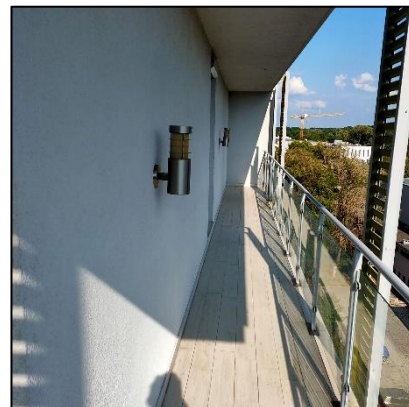
*Pokój - sypialnia*



*Balkony na poziomie II lokalu*



*Balkon od strony ul. St. Staszica*



*Balkon od strony osiedla*



*Wyjście na taras i taras*

